



# SpaceBuilder GLPAC Program

## INSTALLATION INSTRUCTIONS

Version Number: v1.000.003

### Product or Content Description

---

SpaceBuilder GLPAC program for GLPAC control systems

### Notes and Recommendations

---

Before the program is loaded, the GLPAC should be restored to factory default settings to remove any other program files that may have been previously loaded. Make sure files are archived before restoring, if necessary.

### Operational Installation/Upgrade Instructions

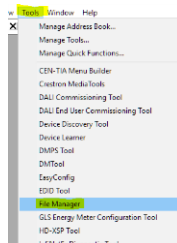
---

These instructions are to assist with the loading of the SpaceBuilder program onto a GLPAC:

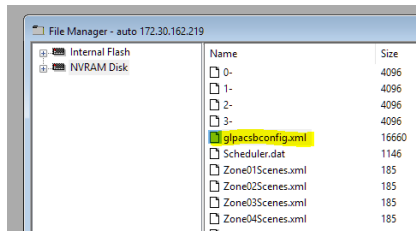
1. Power up GLPAC
2. Use Toolbox to load program from the location where it was saved.

Note, if the system is a standard GLPAC then select the Crestron\_SB3.0\_GLPAC\_v1.000.003.spz file to load, if the system is a GLPAC plus EXPANSION then select the file Crestron\_SB3.0\_GLPAC\_EXP\_v1.000.003.spz to load.

3. After program completes loading sequence for the program file select Tools, then File Manager



4. Click on NVRAM Disk, then delete glpacsconfig.xml highlighted below



5. Right click inside the File Manager window and select Copy File(s) From
6. Navigate to the local folder where the XML is located and click Open to load the file.
7. Similarly, delete the Scheduler file in NVRAM (same location as XML above).
8. Right click inside the File Manager window and select Copy File(s) from
9. Navigate to the local folder where the Scheduler.dat is located and click Open to load the file.
10. Confirm program and related files have been loaded using the Toolbox System Info tool.
11. The system is ready for commissioning.